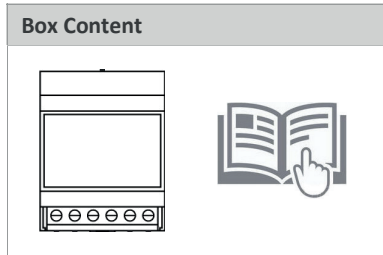


OVERVIEW



Model	Input
JFA03	-/5A

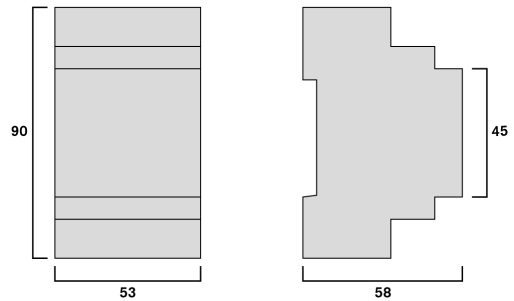


SAFETY PRECAUTIONS

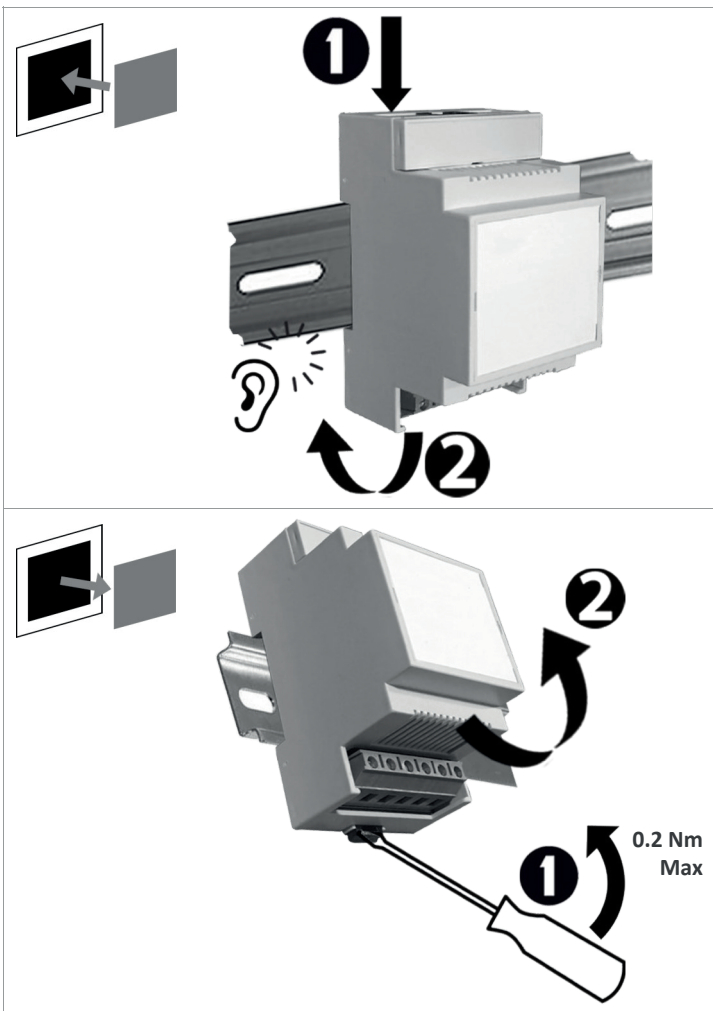
- Safety related notification, symbols and instructions that appear in this operating manual or on the equipment must be strictly followed to ensure the safety of personnel as well as the instrument.
- If the equipment is not used in a manner specified by the manufacturer it may impair the protection provided by the equipment.
- Do not use the equipment if there is any mechanical damage
- Do not exceed the device's maximum limits of rating
- No repairs, maintenance or adjustments are possible
- Read complete instruction prior to installation or operation of the unit
- The equipment in its installed state must not come into close proximity to any heating sources, oils, steam, caustic vapours or other unwanted process by-products
- Do not use in hazardous or classified location where explosion or other dangers can be triggered by the device

SPECIFICATIONS

Accuracy	0.4%
Burden	<2VA per channel
Mounting	DIN rail 35mm
Operating Temperature	-10°C...+45°C
Storage Temperature	-25°C...+70°C



INSTALLATION



WIRING GUIDELINES

- Risk of electric shock!
Only to be installed by a competent person.
- Hager JFA 03 shall only be used with meters and RJ45 cables references from Hager
- To prevent the risk of electrocution, always isolate and lock out the power supply to the equipment prior to undertaking any work
- Always confirm absence of supply prior to starting work using appropriate voltage detection equipment
- Wiring shall be done strictly according to the terminal layout. Confirm that all connections are correct before energizing the equipment

