

Use

The remote control allows the user to set or modify presence detector settings. When the potentiometer is on auto test it allows single and multiple settings.

The SET key is used to send the IR messages to the occupancy sensors. Multiple settings can be stored in Memo 1 and Memo 2 and re-called to set several devices.

Single setting

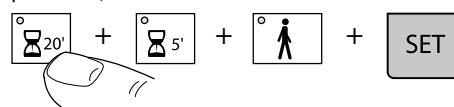
Example: reset



Multiple settings

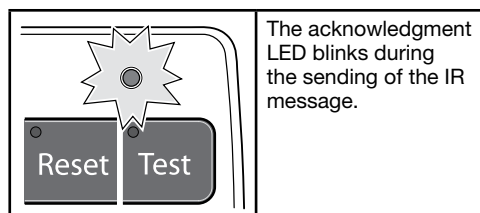
Define the parameters to be changed and press SET to send.

Example: for 25 minutes and corridor use, press 20', 5' and corridor.



In the case of 2 opposite states the green LED denotes ON and red LED denotes OFF (except Presence / Absence).

When no function is selected all LED's are OFF.



Technical specification

Power supply: 1x 3V CR2032

Shelf life of battery: 2½ years

Protection index: IP 30

Settings available

Key	Meaning	Indication	Function
	Presence	Green LED on	Presence on (automation mode)
	Absence	Red LED on	Absence on (semi automatic mode)
	Power Up	Green LED on	The light is automatically switched on for 30 seconds after power up
		Red LED on	During warm up phase, the light output is off
Reset	Reset	LED on	To return to factory settings (Lux = 400, time = 20 min, presence on, power up off and cell active)
Test	Test	LED on	To validate the detection area
	Time	LED on	To set the time It is possible to add times together e.g. press 2' and 5' for a time value of 7'
	Day level 1000 Lux	LED on	To set the value to 1000 Lux
	Learn	LED on	To learn the current Lux level
	Corridor 200 Lux	LED on	To set the value to 200 Lux
	Office 400 Lux	LED on	To set the value to 400 Lux
+	Lux +	LED on	To increase the Lux level (+100)
-	Lux -	LED on	To decrease the Lux level (-100)
	Active cell	Green LED on	The light is continuously measured
	Passive cell	RED LED on	The sensor will not switch the light off even if the ambient luminosity is sufficient
Memo and set Key	Meaning	Indication	Function
Memo 1	Press	LED is on until a setting is changed	To load/unload Memo 1
	Long press	LED is on for 5s, then will blink until released. After release, the LED goes off in case of setting change	To save the current setting as Memo 1
Memo 2	Press	LED is on until a setting is changed	To load/unload Memo 2
	Long press	LED is on for 5s, then will blink until released. After release, the LED goes off in case of setting change	To save the current setting as Memo 2
SET	Short press (<5s)	LED flashes	To send an IR message of the current setting
	Long press (>5s but <10s) only available if no setting active	LED blinks until release press	To toggle automatic mode on DALI/DSI