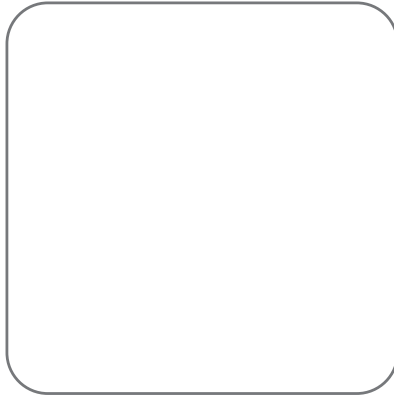


domovea



tebis

TABLE OF CONTENTS

	Page
1. INTRODUCTION	2
1.1 PURPOSE OF THIS DOCUMENT	2
2. IP CAMERA-BASED VIDEO ONLY DOOR ENTRY FACILITY (NO AUDIO)...	3
2.1 ARCHITECTURE.....	3
2.2 CONFIGURATION.....	4
2.2.1 Creating a camera link	4
2.2.2 Configuring the door entry device	6
2.2.3 Client side viewing	10
3. SIP DOORPHONE	11
3.1 DEFINITION	11
3.1.1 Principle	11
3.1.2 Architecture	12
3.2 SIP SERVER ACCESS (ISS300).....	13
3.3 CONFIGURING THE SIP SERVER (ISS300).....	14
3.3.1 Overview.....	14
3.3.2 Configuration	15
3.3.3 Outdoor	16
3.3.4 Call zones.....	17
3.3.5 Indoor.....	18
3.4 CONFIGURING THE DOMOVEA SERVER	20
3.5 CONFIGURING THE DOMOVEA CLIENT	23
3.5.1 Domovea client for the HAGER touch panel	23
3.5.2 Other clients (PC, iPhone, iPad, Android phone, Android tablet).....	24

1. INTRODUCTION

The Domovea intercom function addresses the increasing desire to make homes safer. It provides comfort and peace of mind above all.

Primary functions:

- Door entry device call
- Full or half duplex conversations
- Viewing by camera
- Strike plate control
- Lighting control

1.1 PURPOSE OF THIS DOCUMENT

The descriptions provided in this manual are intended to familiarize installers with the Domovea system's door entry functions.

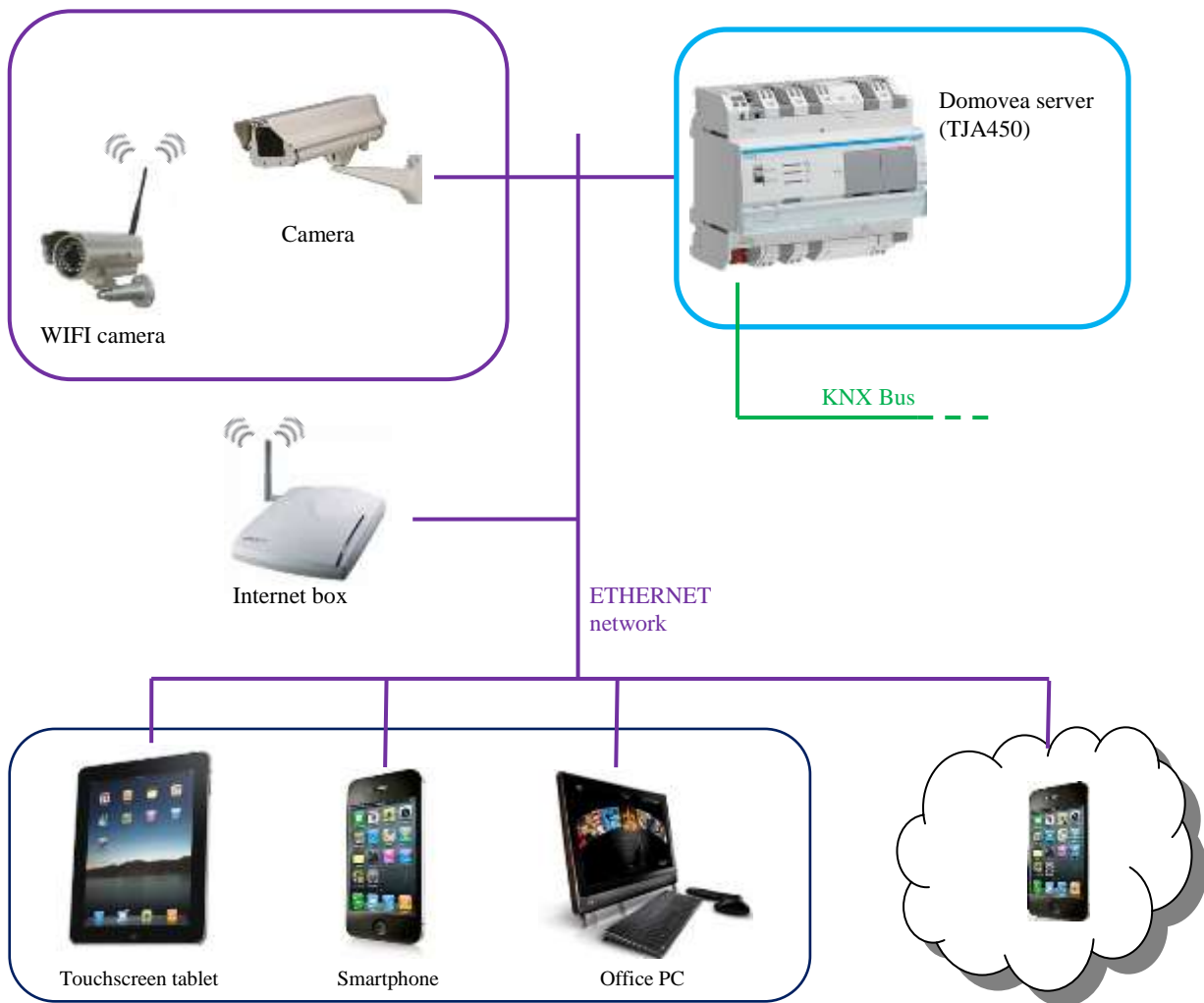
The procedures described in this manual are intended to help installers to configure and then display the Domovea system's door entry functions.

2. IP CAMERA-BASED VIDEO ONLY DOOR ENTRY FACILITY (NO AUDIO)

The video door entry facility allows images from a camera to be viewed when someone rings the bell (ringer). Once the connection has been established, the door can be opened by actuating an electric strike plate and the lights can be switched on.

2.1 ARCHITECTURE

The diagram below provides an overview of the Domovea system door entry facility:



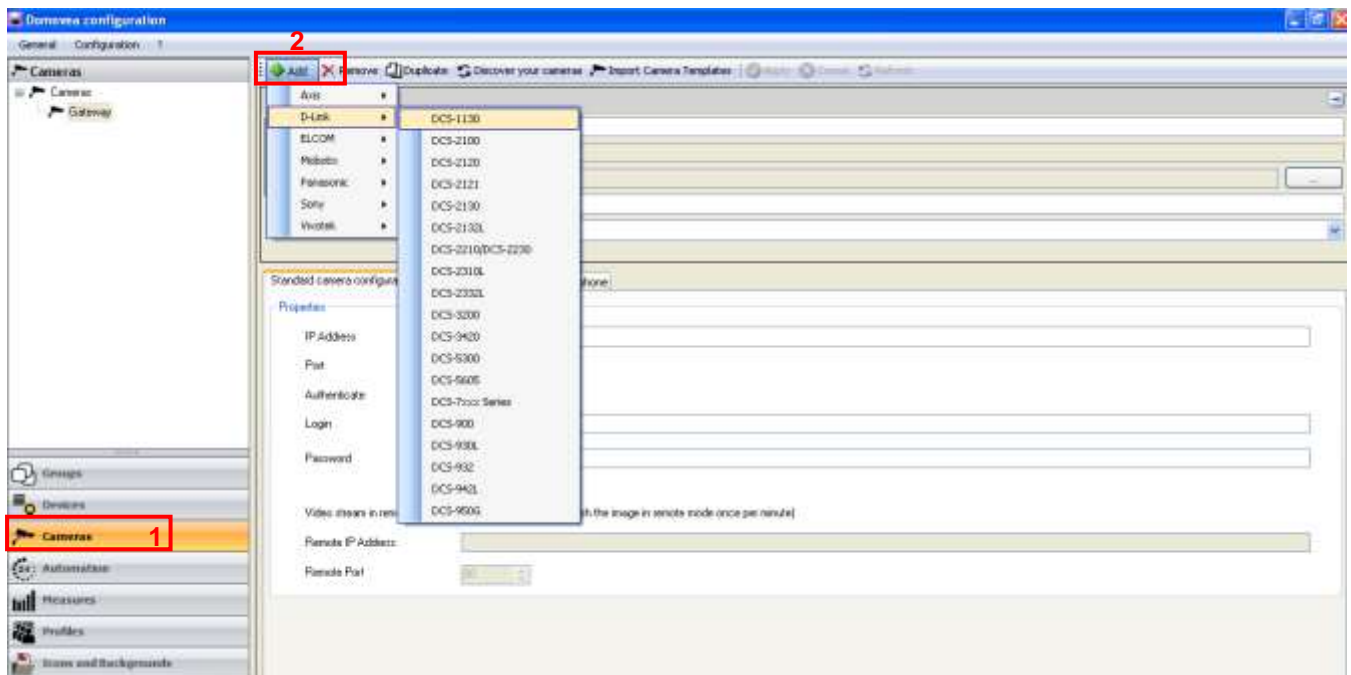
2.2 CONFIGURATION

The camera to be assigned to the door entry facility must be registered in the Domovea settings. Although the camera in question does not have to be dedicated to door entry device, it does have additional functions for notifying the presence of someone at the door and controlling the strike plate.

2.2.1 CREATING A CAMERA LINK

To create a link between a camera and the Domovea system:

- Select **Camera** (1) from the list of links,
- Click on **Add** (2) in the menu bar, then select the make and model of the camera,



- Enter the following fields in the properties window:
 - **Name (3):** Used for assigning a name to the camera.
 - **Description (4):** Used for providing a more precise description of the camera.
 - **Visibility (5):** There are three visibility options:
 - Local and remote access: Allows access to the device via the Domovea client and the www.domovea.com web portal.
 - Local access: Allows access to the device via the Domovea client only.
 - No access: Prevents access to the device either via the Domovea client or the www.domovea.com web portal.
 - **Icon (6):** Used for customizing the icon. Click on the icon, then double-click on the desired icon in the list of icons.

Properties

Name: 3

Model: Axis M11 Door Series

Genre:

Description: 4

Visibility: Local and remote access 5

Under the camera's Configuration tab:

- **In local mode** (on your local network)

CAUTION: the camera must be authorized on the network and its ports must be open.

- Enter the camera's IP address (7),
- Enter the port (8) used by the camera,
- Tick the **Authenticate** box (9) if authentication is required, then enter the camera **login** (10) and password (11),
- Click on **Apply** to confirm the changes.

Two additional tabs are available for making changes to the advanced camera settings:

- **Advanced image settings:** Used for adjusting advanced image settings such as image quality, compression, frame rate, etc.
- **Door entry device:** Used for assigning a device to trigger the camera.

Standard camera configuration | **Advanced image settings** | Doorphone

Properties

IP Address: 7

Port: 8

Authenticate: 9

Login: 10

Password: 11

Video stream in remote mode: (if not selected: refresh the image in remote mode once per minute)

Remote IP Address:

Remote Port:

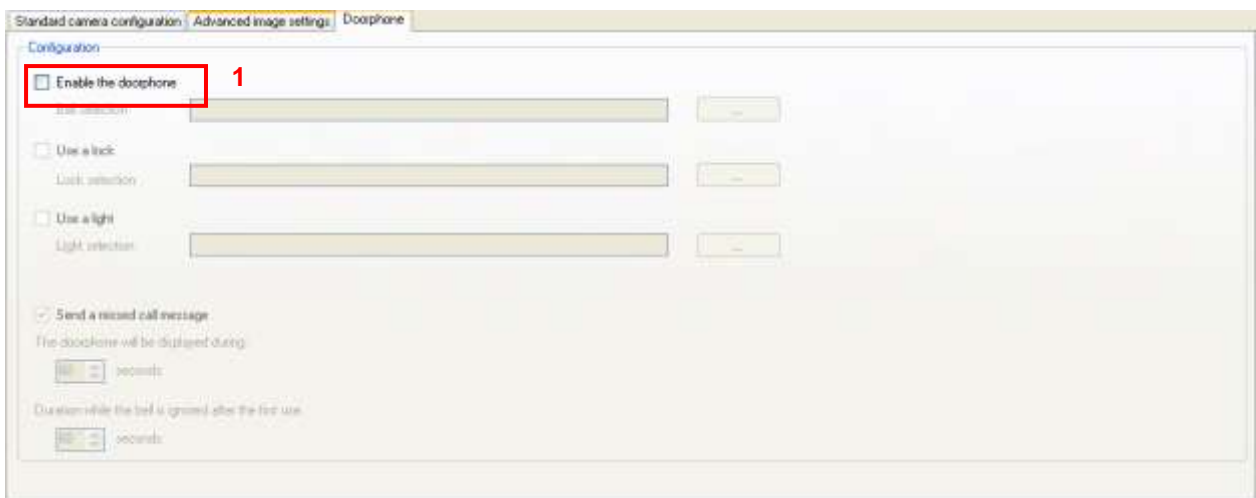
2.2.2 CONFIGURING THE DOOR ENTRY DEVICE

In order to configure the door entry device, 3 types of device must be assigned to the function:

- **Binary input:** Device which allows the door entry device to call (ringer)
- **Pulse:** Device capable of actuating the strike plate to open the entrance door.
- **Light:** Device which allows the light fixture in front of the door to be turned on or off if necessary.

Under the door entry tab:

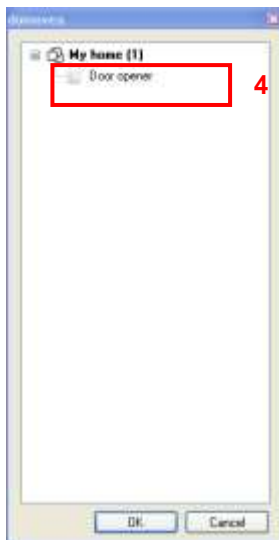
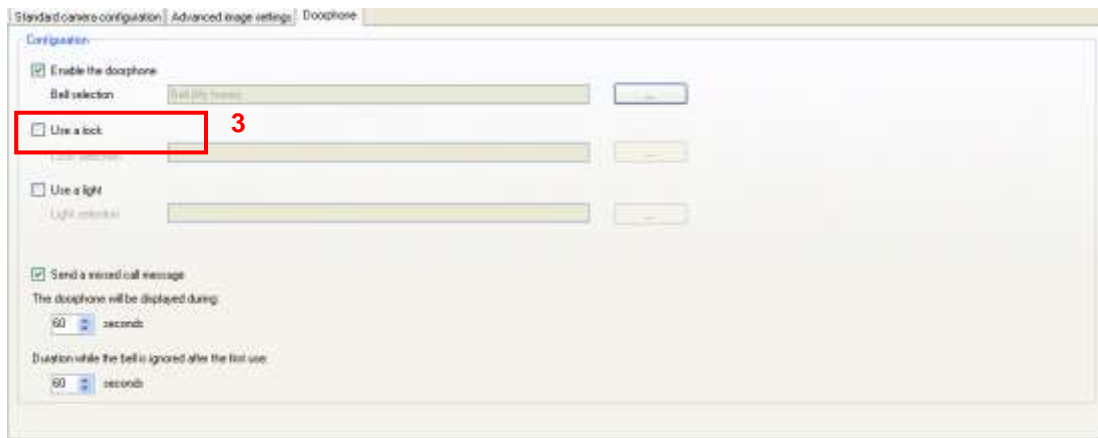
- Click on **Enable the doorphone** (1).



- Select the device (2) corresponding to the ringer.

Note: the list of devices displayed corresponds to **Binary Input** type devices only.

- Click on **Use a lock** (3) to select the strike plate command corresponding to the entrance door.



- Select the device (4) corresponding to the entrance door opener command.

Note: the list of devices displayed corresponds to **Pulse** type devices only.

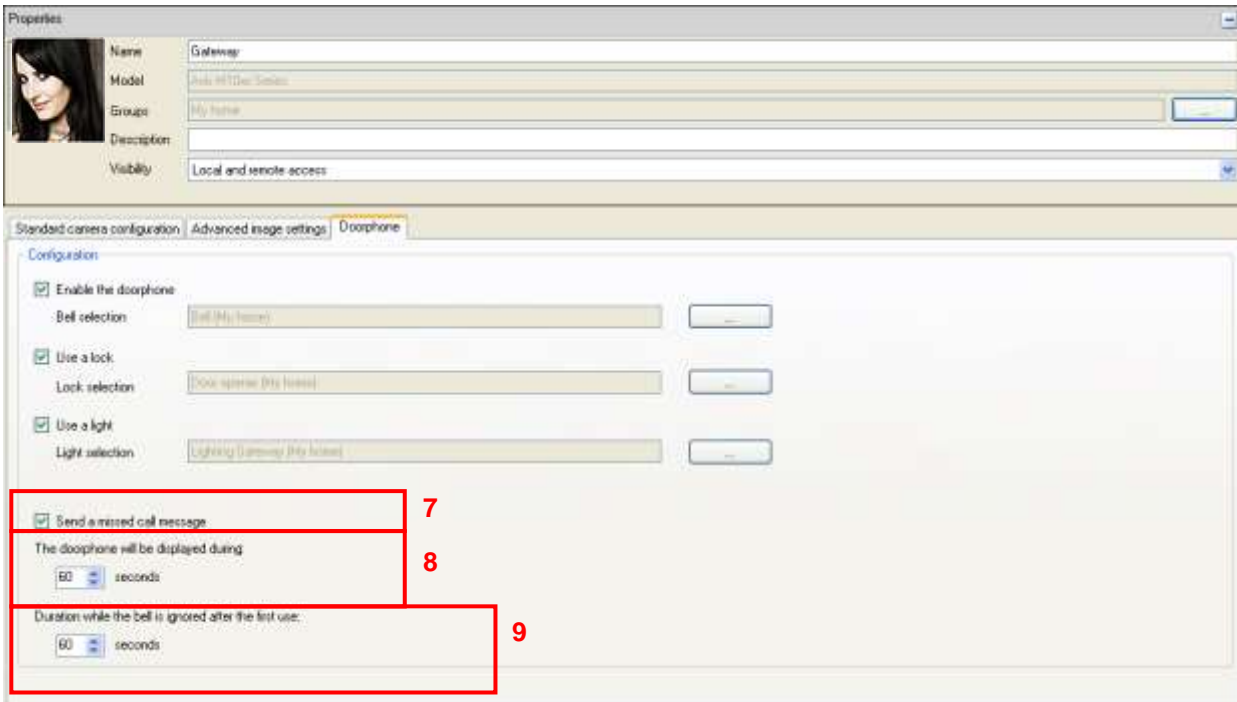
- Click on **Use a light** (5) to select the light fixture corresponding to the front door.



- Select the device (6) corresponding to the lighting gateway.

Note: the list of devices displayed corresponds to **Light or Dimmer** type devices only.

The video door entry function is now operational.



Further settings affecting operation of the video door entry function can also be configured where required.

- **Send a missed call message (7):**

When a call is missed, it can be saved in the notifications.

- **The doorphone will be displayed during (8):**

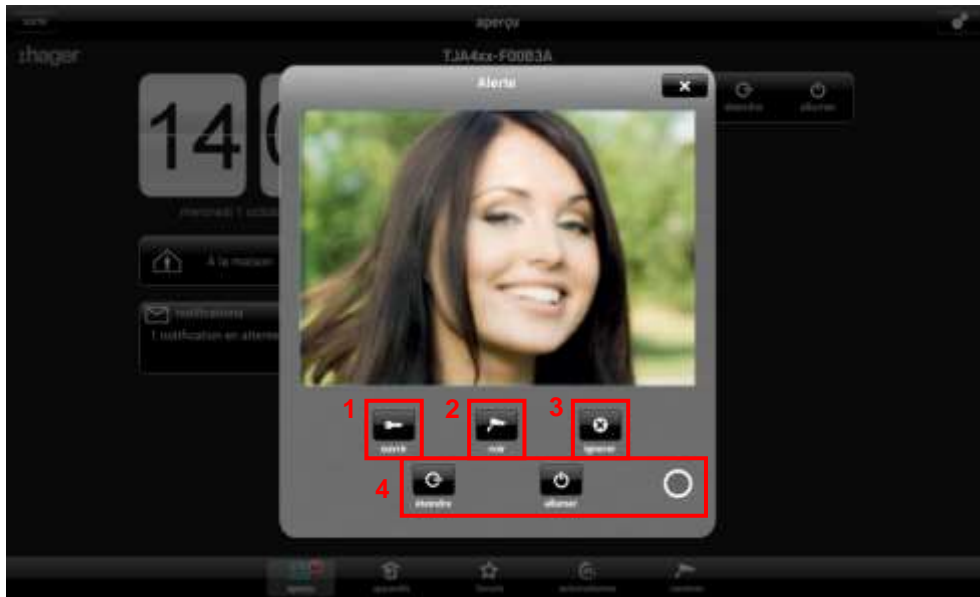
The call notification is displayed in the foreground for a configurable period. If the call is not answered within the specified time frame, the call window will automatically close.

- **Duration while the bell is ignored after the first use (9):**

In order to avoid multiple call notifications, a period during which the ringer is disabled after the first press can be configured.

2.2.3 CLIENT SIDE VIEWING

When the entrance door button is pressed, a window is displayed in the Domovea client.



There are several choices available:

- Open the door by actuating the strike plate (1)
- Open the camera view to increase the image size (2)
- Ignore the call (3)
- Control the lighting gateway (4)

If a call is missed, a timed and dated log entry is stored in the notifications.

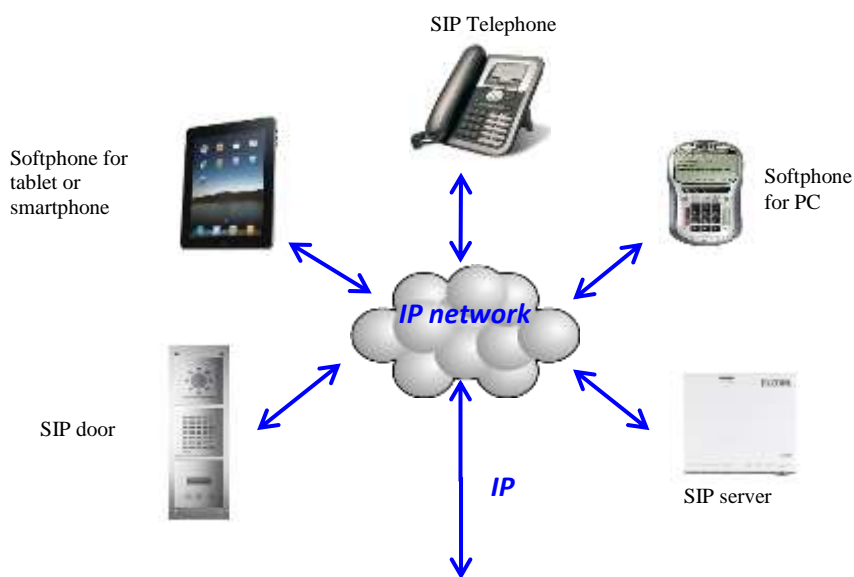


3. SIP DOORPHONE

3.1 DEFINITION

In addition to the providing a video feed from a camera, the SIP DOORPHONE intercom also provides an audio link between the outside panel and a Domovea client. Once the connection has been established, the door can be opened by actuating an electric strike plate and the entrance door lights can be switched on.

3.1.1 PRINCIPLE



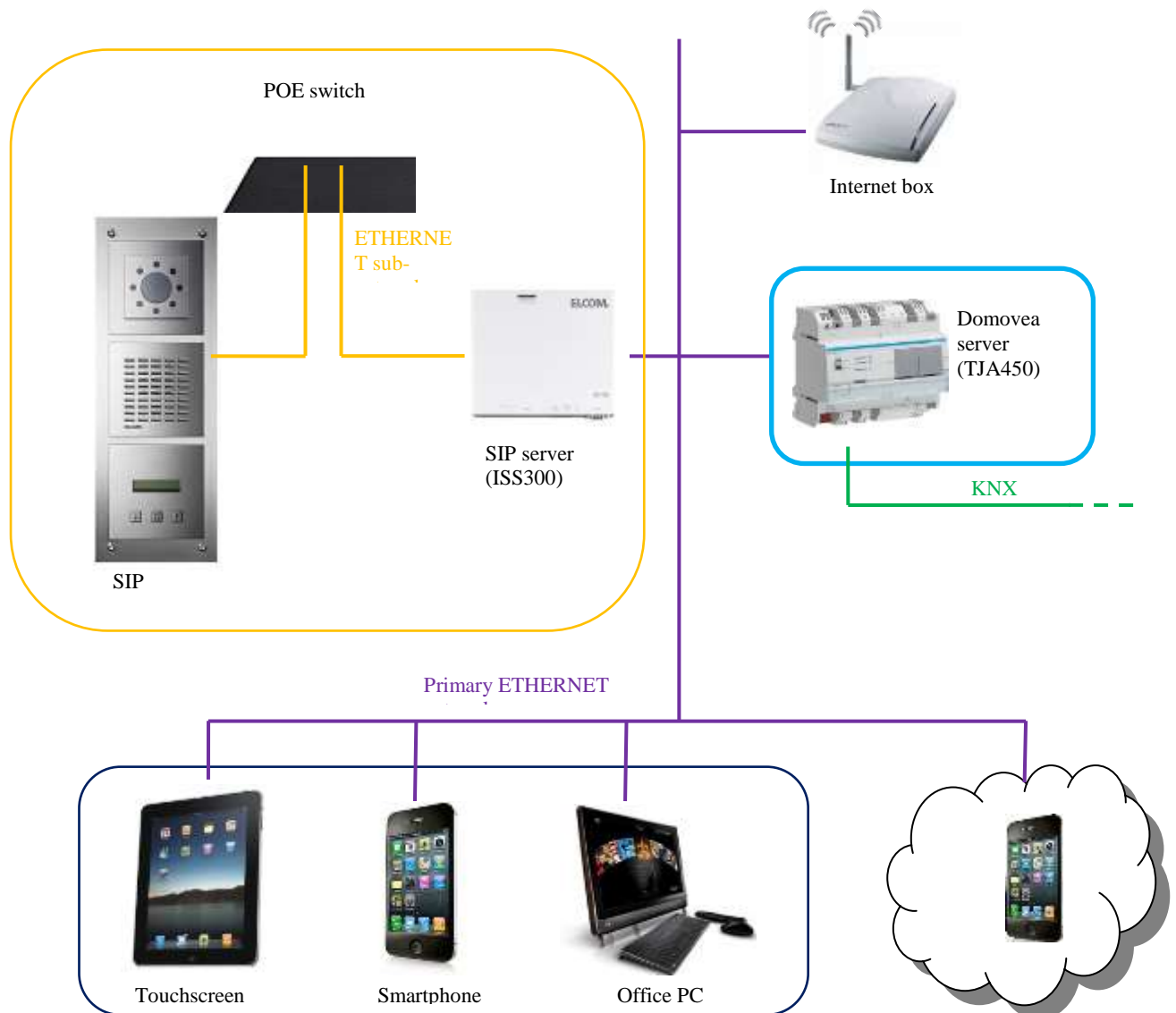
SIP systems are structured as follows:

- SIP server for managing calls and connections between stations. The server handles the authentication and location of all the system members.
- Each SIP station has its own IP address and SIP number for the purposes of management and identification.

Note: There are several different types of SIP station. These include physical stations such as telephones or dedicated door entry systems and virtual stations in the form of software devices (softphones) capable of operating on PCs, tablets or smartphones.

3.1.2 ARCHITECTURE

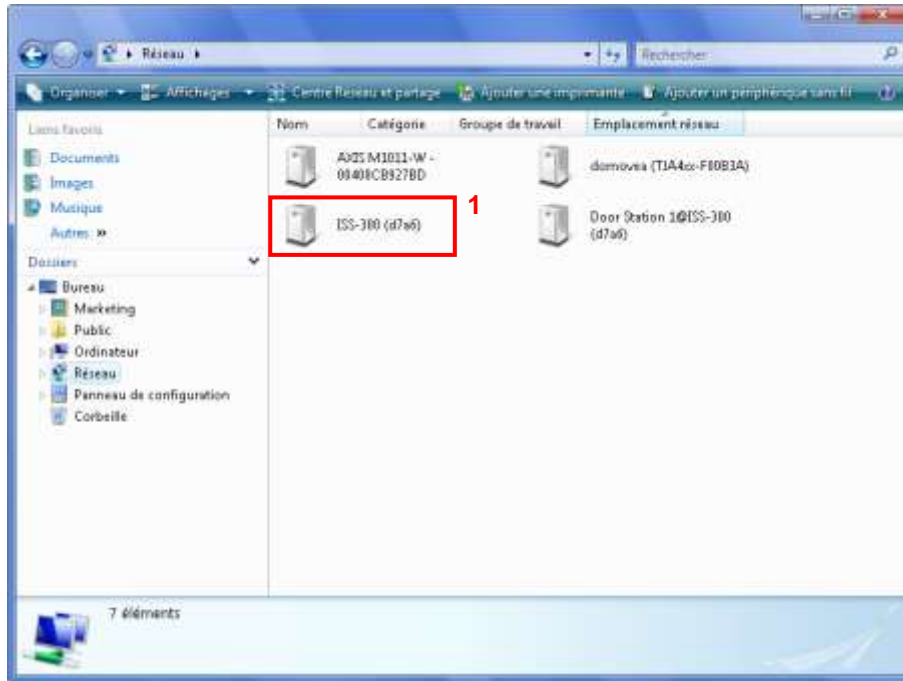
The diagram below provides an overview of the Domovea system SIP door entry functions:



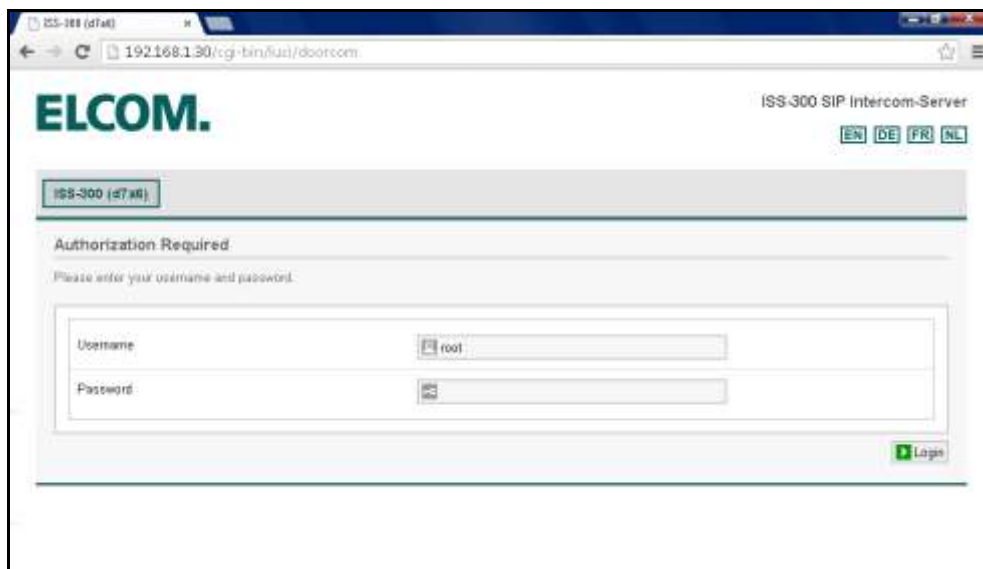
The SIP server provides the facility to handle calls at the door and can additionally create a dedicated network for intercom traffic. In this way, the primary network of the house is kept separate from the external network.

3.2 SIP SERVER ACCESS (ISS300)

When the system boots up, the IP addresses are allocated automatically (DHCP). To access the SIP server's configuration page, run the WINDOWS network explorer.



- Click on the ISS-300 (1) icon to launch the WEB browser and display the server page.



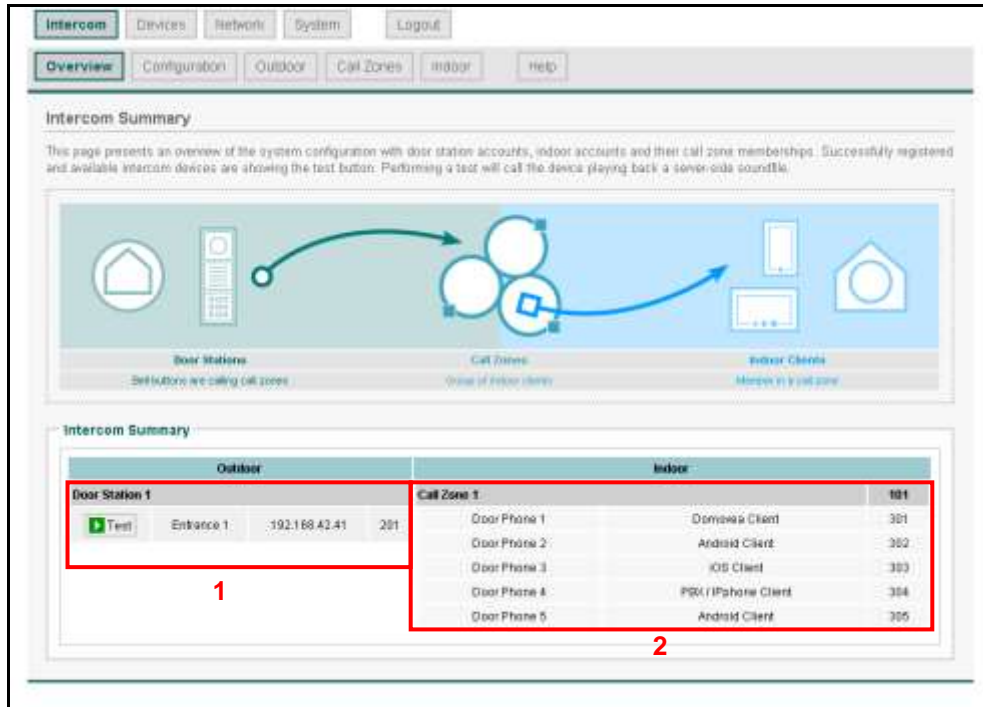
3.3 CONFIGURING THE SIP SERVER (ISS300)

To configure the SIP server:

- Enter the username (default name: root) and password (default password: 1234).

3.3.1 OVERVIEW

This brings up a window displaying the stations registered to the outdoor and indoor sections.



The screenshot shows the Intercom web interface. At the top, there are navigation tabs: Intercom, Devices, Network, System, and Logout. Below that, there are sub-tabs: Overview, Configuration, Outdoor, Call Zones, Indoor, and Help. The main content area is titled 'Intercom Summary' and contains a diagram showing the relationship between Door Stations, Call Zones, and Indoor Clients. Below the diagram, there is a table with two main sections: Outdoor and Indoor. The Outdoor section is highlighted with a red box and labeled '1'. The Indoor section is also highlighted with a red box and labeled '2'.

Outdoor				Indoor		
Door Station 1				Call Zone 1		tot
<input type="checkbox"/> Test	Entrance 1	:192.168.42.41	201	Door Phone 1	Desktop Client	301
				Door Phone 2	Android Client	302
				Door Phone 3	iOS Client	303
				Door Phone 4	PSX / iPhone Client	304
				Door Phone 5	Android Client	305

The outdoor section (1) shows a list of the door entry devices registered on the server and includes:

- The name of the door entry device
- The IP address of the door entry device
- The SIP account of the door entry device

The indoor section (2) shows a list of the client stations and different call zones registered on the server and includes:

- The name of the station
- The client station type
- The SIP account of the station

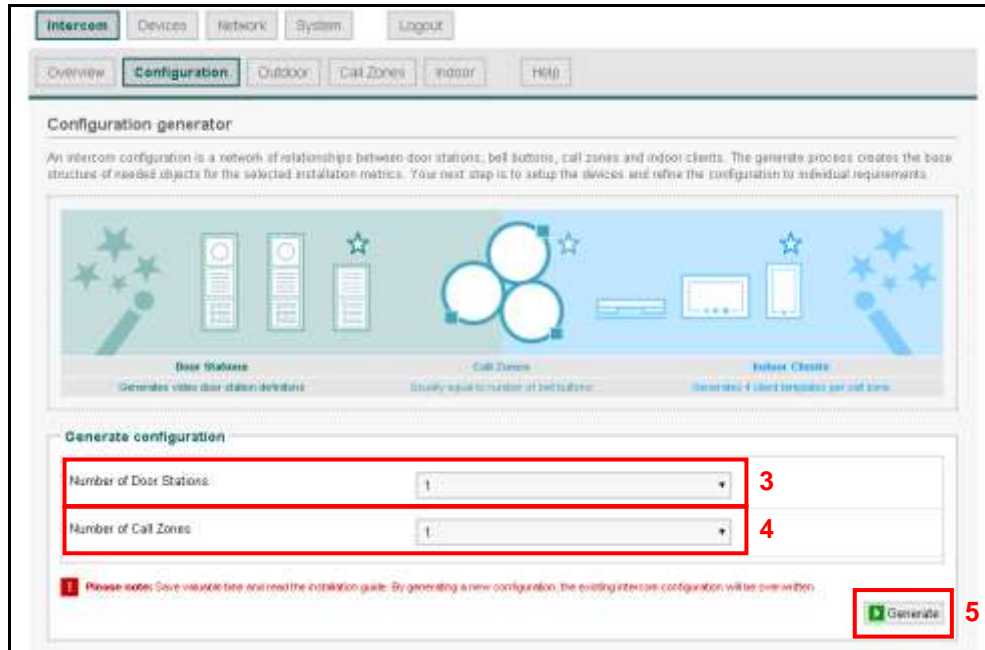
The call zone determines which stations have access or should ring when the door entry device calls. The first station to pick up stops the other stations from ringing.

Note: If the **Test** button is apparent in the station header this indicates that the station is connected. If this button is clicked, the station in question will emit a sound allowing it to be physically located.

3.3.2 CONFIGURATION

The Configuration tab is used for:

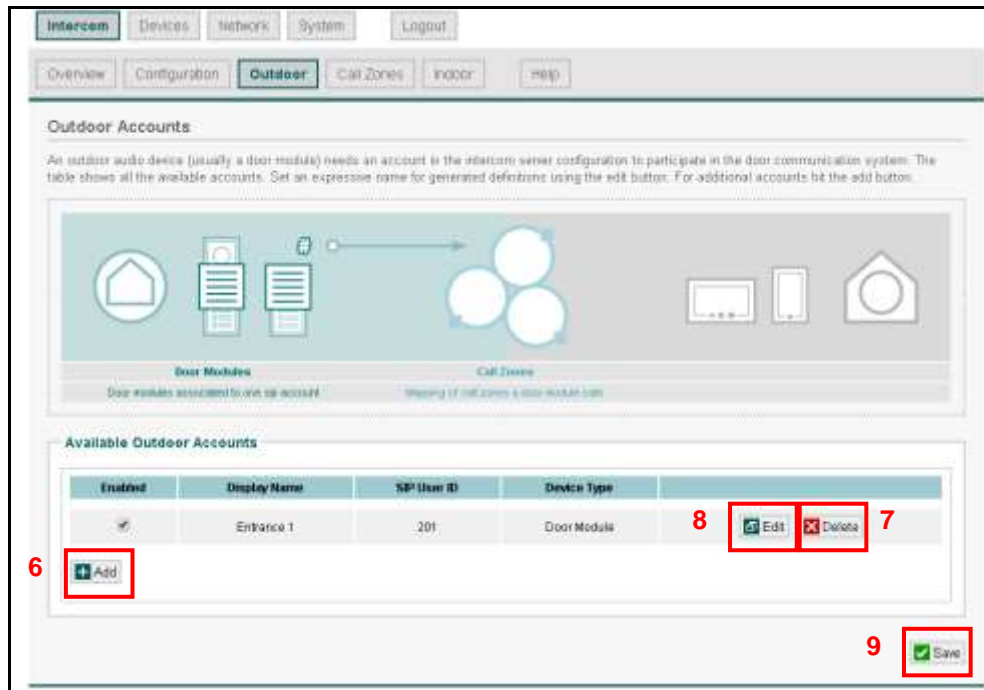
- Defining the number of door entry devices to configure in the system (3)
- Defining the number of call zones to configure in the system (4)
- Click on the **Generate** button (5) to save the settings.



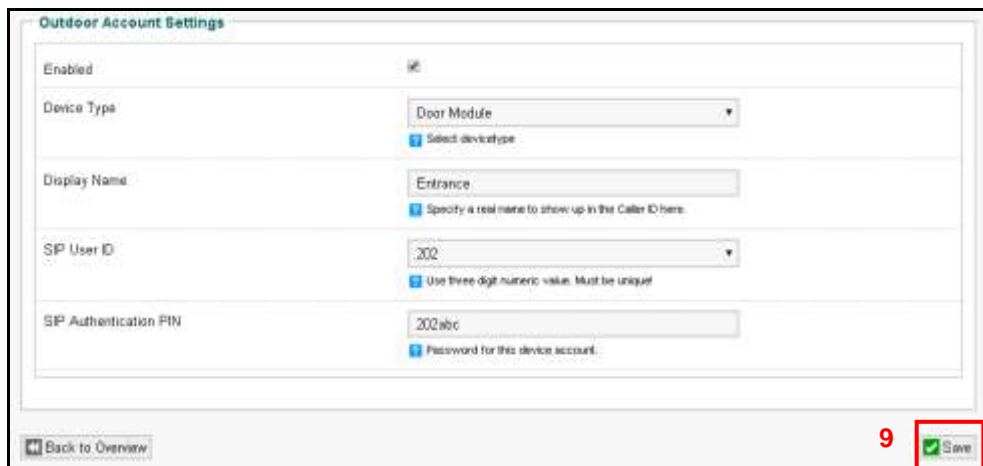
3.3.3 OUTDOOR

The Outdoor tab is used for:

- Adding door entry intercoms (6).
- Deleting door entry intercoms (7).
- Changing the door entry door entry intercom settings (8).



Changing the door entry intercom settings



Enabled:

Device Type: Door Module

Display Name: Entrance

SIP User ID: 202

SIP Authentication PIN: 202abc

Enabled: Used for activating the door entry device .

Device Type: Used for selecting the type of door entry device used.

Display Name: Used for entering the name of the intercom to reflect its installed location (For example: Entrance door).

SIP User ID: Used for defining the intercom number (For example: 202).

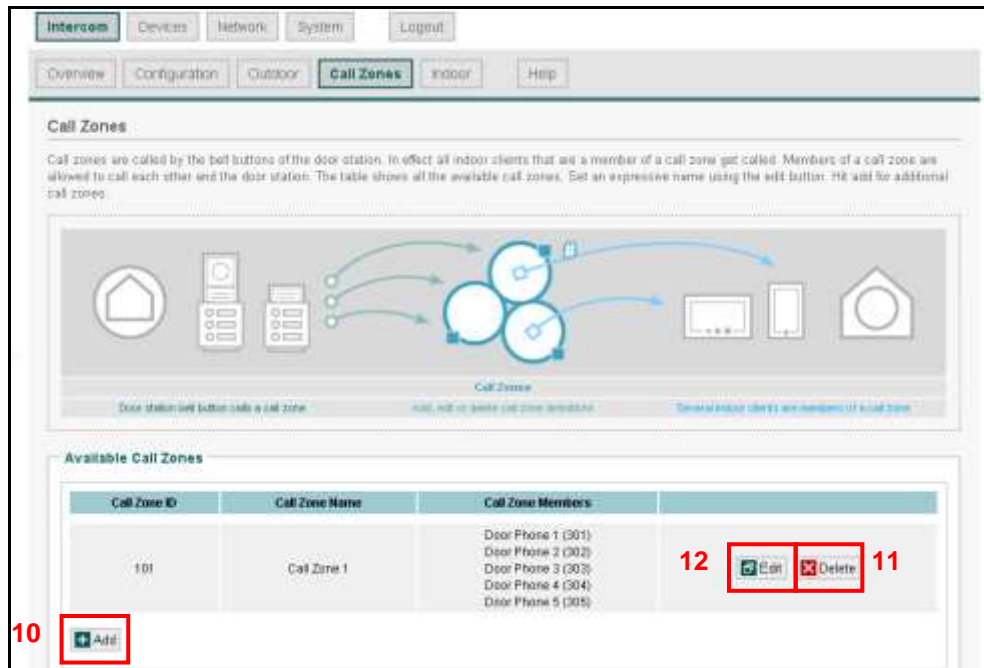
SIP Authentication PIN: Used for setting the intercom password (For example: 202abc).

NOTE: When you have finished changing the settings, click on SAVE (9) to save the changes.

3.3.4 CALL ZONES

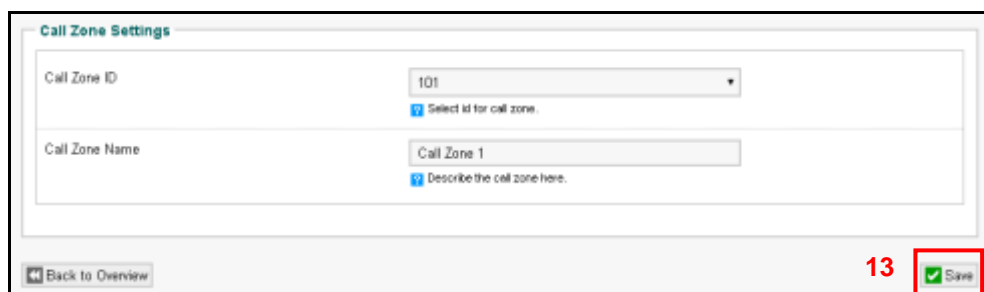
The call zones tab is used for:

- Adding call zones (10).
- Deleting call zones (11).
- Changing the call zone settings (12).



Call zones are used to configure which indoor stations will ring when the intercom call button is pressed.

Editing the call zone settings



Call Zone ID: Used for setting the call zone number (For example: 101).

Call Zone Name: Used for entering a name for the call zone that describes who is alerted to an intercom call
(For example: general zone).

NOTE: When you have finished changing the settings, click on SAVE (13) to save the changes.

3.3.5 INDOOR

The Indoor tab is used for:

- Adding client intercoms (14).
- Deleting client intercoms (15).
- Changing the client intercom settings (16).

Indoor Accounts

Every indoor device needs an account in the intercom server configuration to participate in the door communication system. The table shows all available accounts. Set an expressive name for generated definitions using the edit button. Remove unwanted with delete. For additional accounts hit the add button.

Enabled	Display Name	SIP User ID	Device Type	Membership	
<input checked="" type="checkbox"/>	Door Phone 1	301	Domovna Client	Call Zone 1 (101)	<input type="button" value="Edit"/> <input type="button" value="Delete"/>
<input checked="" type="checkbox"/>	Door Phone 2	302	Android Client	Call Zone 1 (101)	<input type="button" value="Edit"/> <input type="button" value="Delete"/>
<input checked="" type="checkbox"/>	Door Phone 3	303	iOS Client	Call Zone 1 (101)	<input type="button" value="Edit"/> <input type="button" value="Delete"/>
<input checked="" type="checkbox"/>	Door Phone 4	304	PEB / Iphone Client	Call Zone 1 (101)	<input type="button" value="Edit"/> <input type="button" value="Delete"/>
<input checked="" type="checkbox"/>	Door Phone 5	305	Android Client	Call Zone 1 (101)	<input type="button" value="Edit"/> <input type="button" value="Delete"/>

Changing the client intercom settings

Indoor Account Settings

Enabled

Device Type: Android Client

Display Name: Door Phone

SIP User ID: 305

SIP Authentication PIN: 305abc

Call Zone Membership: Call Zone 1 (101)

Enabled: Used for activating the client intercom.

Device Type: Used for selecting the type of client intercom used (Android, IOS, Windows, Domovea or PBX/IPhone client, Custom).

Display Name: Used for entering the name of the intercom to reflect its user (For example: Dad's mobile).

SIP User ID: Used for setting the client intercom number (For example: 306).

SIP Authentication PIN: Used for setting the client intercom password
(For example: 306abc).

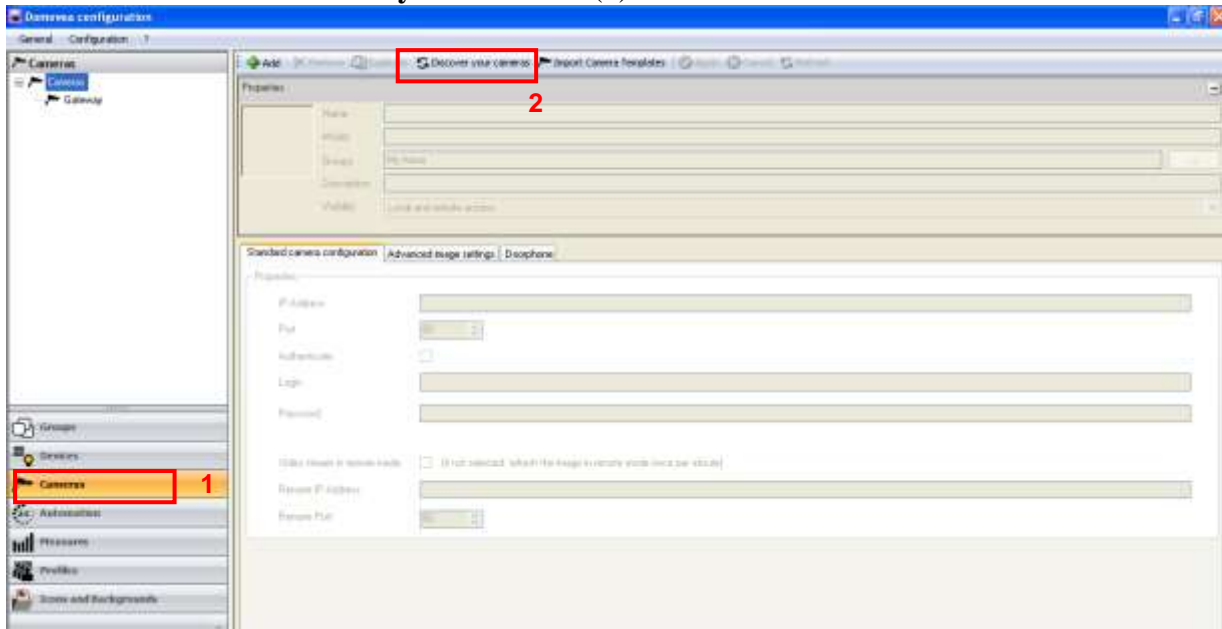
Call Zone Membership: Used for defining the client intercom call zone
(For example: 101).

NOTE: When you have finished changing the settings, click on **SAVE** (17) to save the changes.

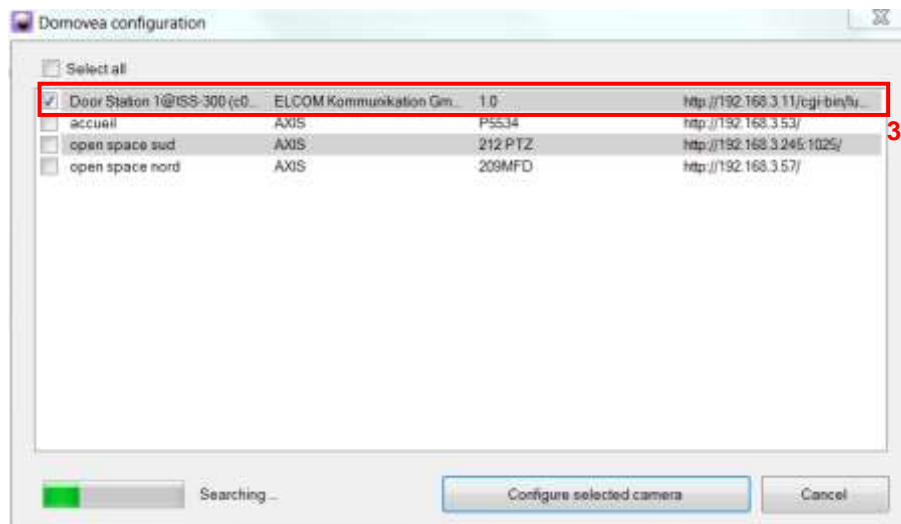
3.4 CONFIGURING THE DOMOVEA SERVER

To add the video door entry intercom:

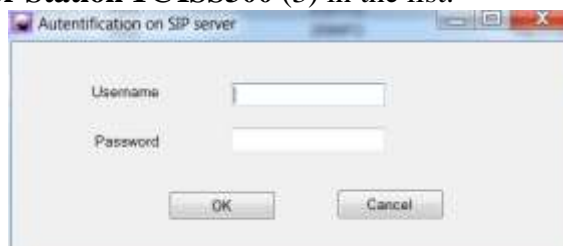
- Click on **Cameras** (1) in the list of tabs,
- Click on **Discover your cameras** (2) in the menu bar.



A window is displayed showing all the available cameras on the network.

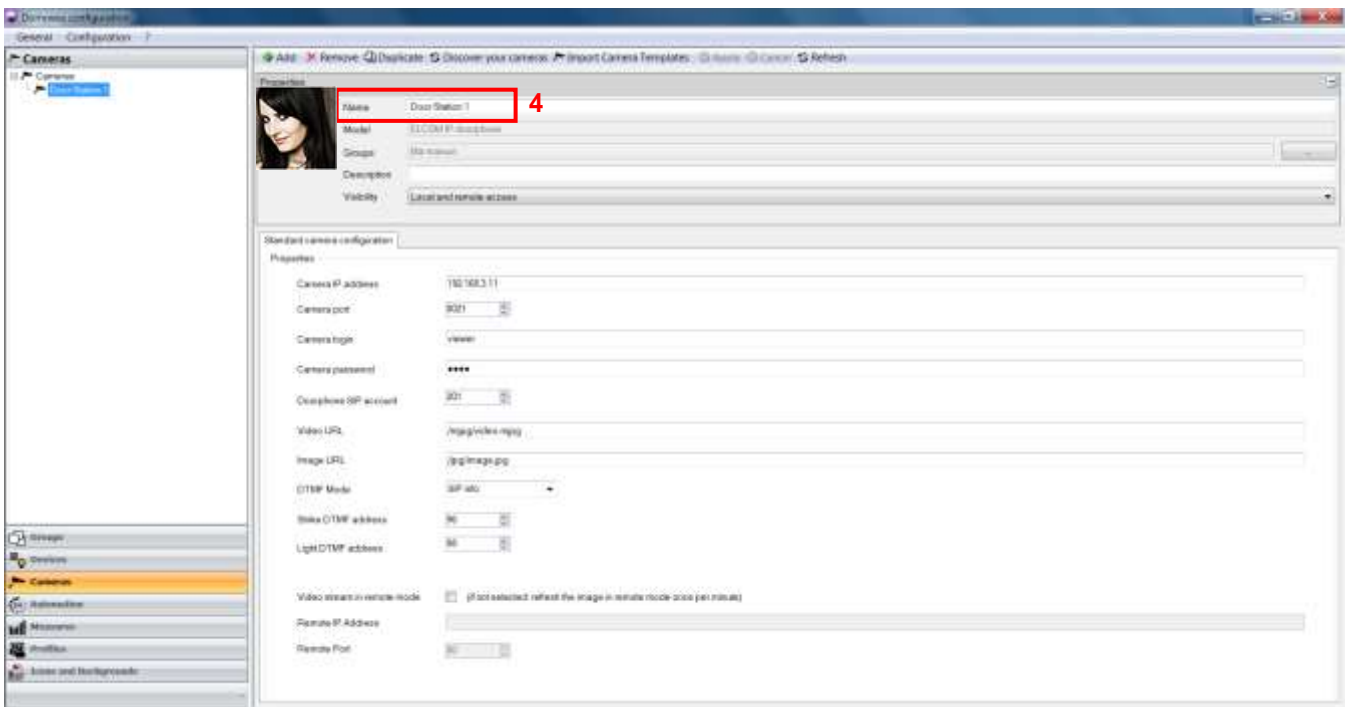


- Click on **Door Station 1@ISS300** (3) in the list.



- Enter the user name (default name: root) and password (default password: 1234) of the

video door entry device.



The configuration module automatically retrieves all the video door entry device settings.

Detailed video door entry device settings



IP address of the camera: Used for entering the IP address of the video door entry device on the network.

Port: Used for selecting the port to use for sending images.

Camera login: Used for entering the username to use to authenticate the video door entry device on the system.

Password: Used for entering the password to use to authenticate the video door entry device on the system.

Doorphone SIP account: Used for setting the video door entry device station number.

Video URL: Used for setting the address of the video stream.

Image URL: Used for setting the address of the image stream.

DTMF mode: Used for setting the type of DTMF to correspond to the video door entry device settings .

Strike DTMF address: Used for setting the frequency to use for actuating the strike plate.

Light DTMF address: Used for setting the frequency to use for controlling the lights.

Video stream in remote mode

If the box is not checked, the cameras will be visible in remote mode (domovea.com portal or mobile applications) with a refresh rate of one image per minute only.

If the box is checked, users can view video streams from their mobile applications (but not via the domovea.com portal)

NOTE: the camera must be authorized to communicate with the Internet and the ports used must be redirected.

- Enter the camera's remote IP address,
- Enter the camera's remote port.

NOTE: In remote mode, only the camera feed is available (no audio).

3.5 CONFIGURING THE DOMOVEA CLIENT

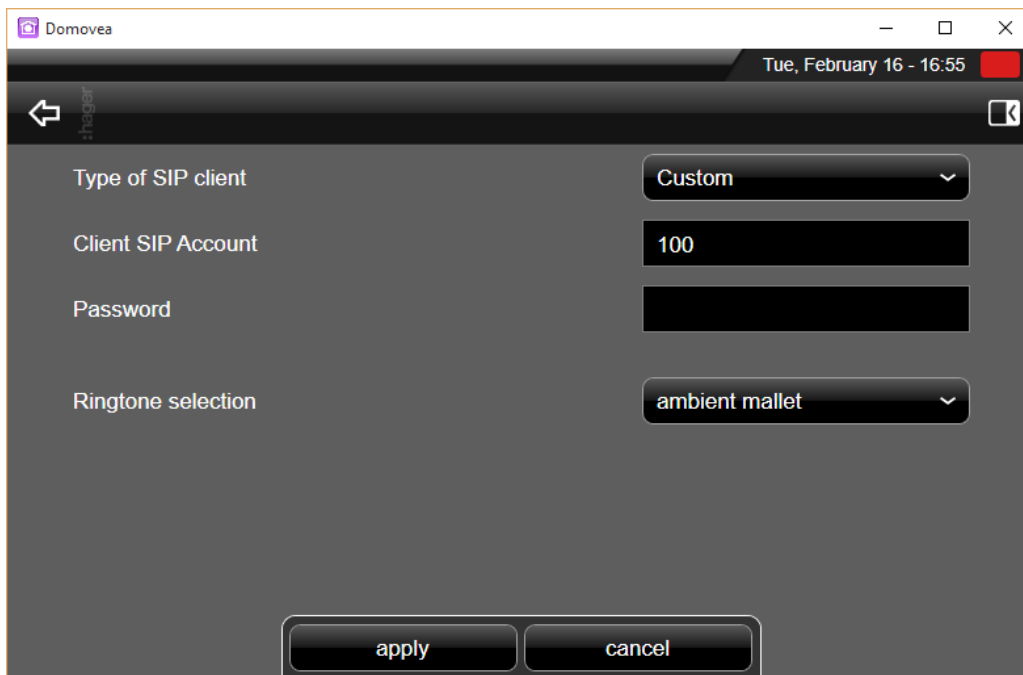
For the Domovea client, two types of software are available depending on the platform used:

- The DOMOVEA software which only runs on the Hager touchscreen under the Android and Windows operating systems (references: WDI070, WDI100, WDI101 and WDI161): The Door entry function is directly integrated in the Domovea interface.
- The ELCOM software which runs on PC, iPhone, iPad, Android phone and Android tablets: The door entry function is supported by the ELCOM software which can be downloaded from the Apple store or the Play store in the case of the Android OS.

3.5.1 DOMOVEA CLIENT FOR THE HAGER TOUCH PANEL

In the Domovea client application, all that is needed is to select the SIP account to be used and the associated password to establish a connection with the door entry intercom.

Note: A SIP account must be used on only one domovea client.





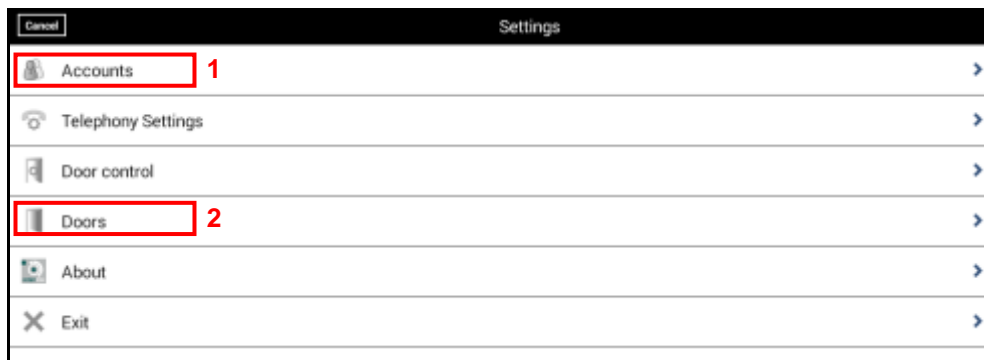
3.5.2 OTHER CLIENTS (PC, IPHONE, IPAD, ANDROID PHONE, ANDROID TABLET)

To use the door entry intercom on IOS or Android, the ELCOM client application must be downloaded from the Apple store or Play store.

- Download and install the ELCOM VIDEOFON application.



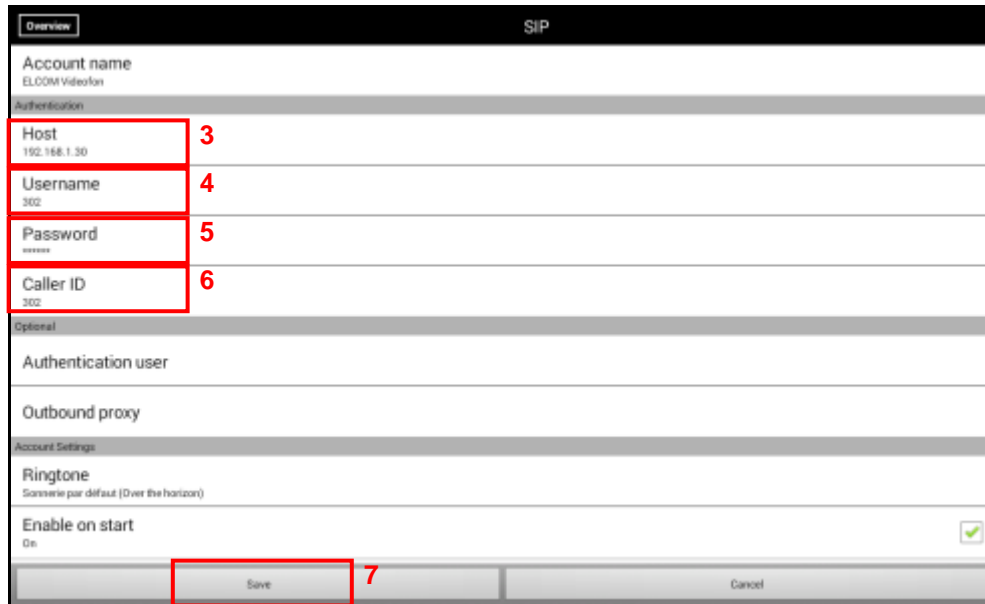
- Run the application
- Go into **Settings**



To work with the door entry intercom, the SIP server must be set up in the application and the calling door entry intercom number configured.

To register the SIP server:

- Click on **Accounts** (1)



- Click on **Host** (3)
- Enter the IP address of the SIP server (For example: 192.168.1.30)
- Click on **Username** (4)
- Enter the SIP number of the station (Example: 302)
- Click on **Password** (5)
- Enter the password for the SIP number (For example: 302abc)
- Click on **Caller ID** (6)
- Enter the username of the station (For example: Jean Mobile)
- Click on **Save** (7) to save the settings.

Note: The SIP number and password correspond to the stations registered on the SIP server (see chapter 3.3.5).

To configure the number of the calling door entry intercom:

- Click on **Door** (8)



- Click on **Door 1** (8) to set the first call button.

Note: The setup method is identical for entries 2 to 4.



- Click on **Videostream URL** (9)
- Enter the complete IP address for the SIP server and include the port and path of the video stream (For example: 192.168.1.30:8201/mjpg/video.mjpg)
- Click on **Username** (10)
- Enter the username (default name: admin) for access to camera.
- Click on **Password** (11)
- Enter the password (default password: 1234) to access the camera.
- Click on **SIP-ID** (12)
- Enter the SIP number of the door entry intercom (201).
- Exit setup mode to return to the startup window.



Note: The status tab (13) shows the state of the connection with the SIP server.

- Green signifies that the connection with the SIP server is established.
- Red signifies that the connection with the SIP server is interrupted.

Using the ELCOM application



- Click on the camera symbol (14) to select the door entry intercom
- Click on the Speaker symbol (15) to establish audio communications with the door entry intercom
- Click on the key symbol (16) to actuate the door's electric strike plate.
- Click on the light symbol (17) to control the door entry device lights

To mute the audio call notification, click on the ringer symbol (18).

Note: When someone presses the door entry intercom , the camera is automatically selected. Click on the Speaker symbol (15) to establish audio communications with the door entry intercom.