

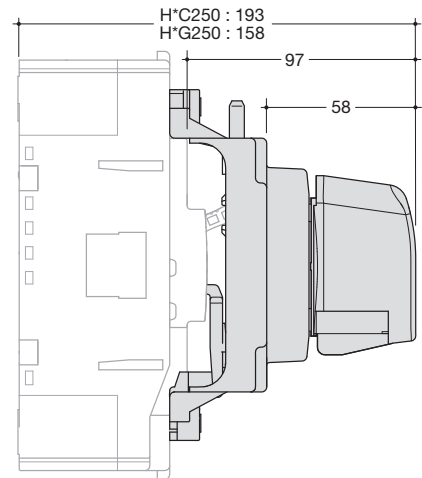
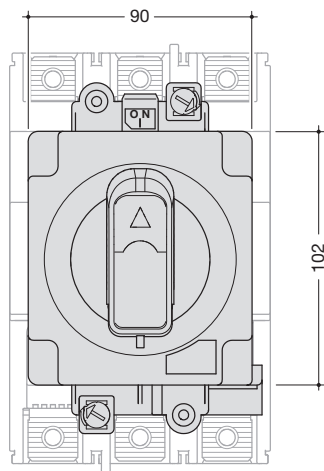
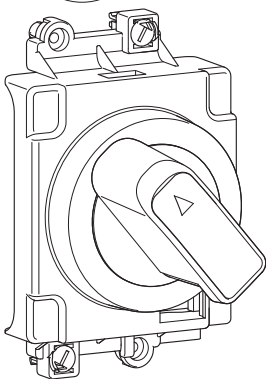
h250



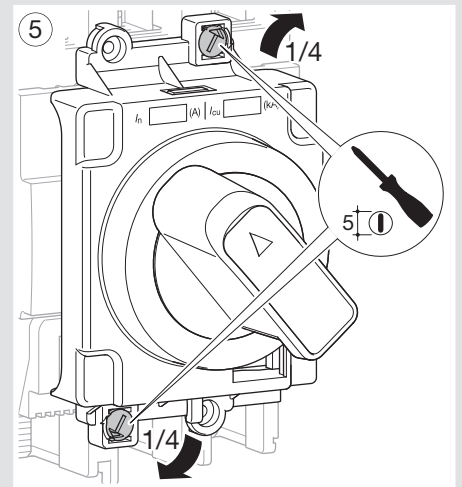
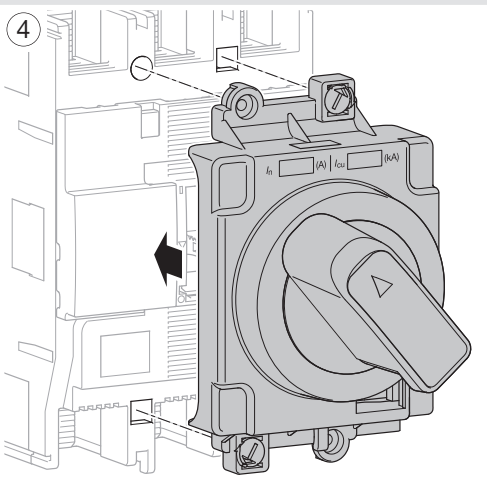
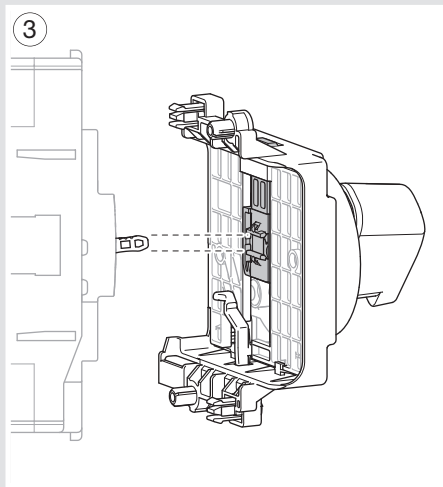
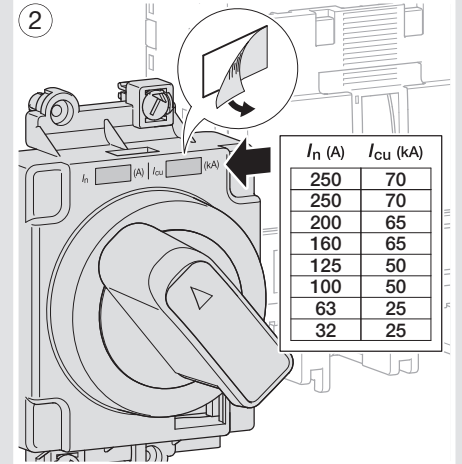
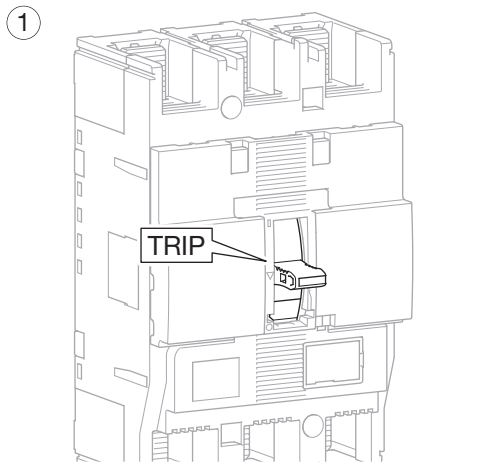
- (FR) Commande rotative HXC030H
- (GB) Rotary handle HXC030H
- (DE) Drehantrieb HXC030H
- (IT) Comandi rotativi HXC030H
- (ES) Mandos rotativos HXC030H
- (NL) Draaibediening HXC030H
- (PT) Comando rotativo HXC030H
- (NO) Vrihåndtak HXC030H
- (GR) Περιστροφικό χειριστήριο HXC030H
- (PL) Napęd obrotowy HXC030H
- (RU) Поворотная рукоятка HXC030H
- (CN) 旋转手柄 HXC030H

- Notice d'instructions
- User instructions
- Montageanleitung
- Istruzioni di montaggio
- Instrucciones de uso
- Gebruiksaanwijzing
- Instruções de instalação
- Bruksanvisning
- Οδηγίες χρήσεως
- Instrukcja obsługi
- Руководство по эксплуатации
- 用戶手冊

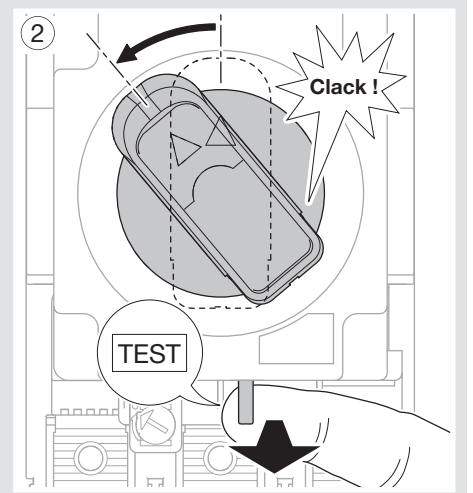
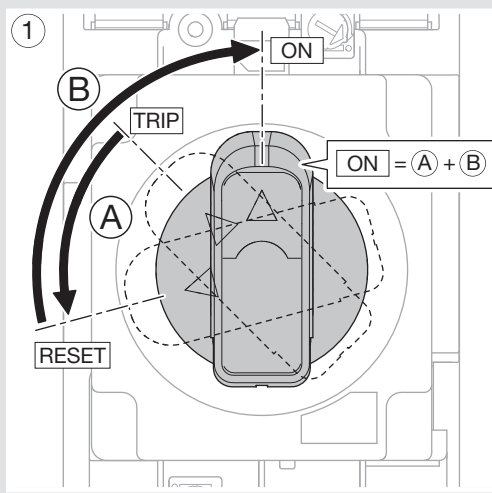
3 P - 4 P



- Assemblage de la commande rotative sur le disjoncteur
- Fitting the rotary handle on MCCB
- Verbinden des Drehantriebs mit dem Leistungsschalter
- Installazione del comandi rotativi sull'interruttore
- Ensamblaje del mandos rotativos sobre el interruptor automático
- Montage draaibediening aan vermogens-au tomaat/-schakelaar
- Montagem do comando rotativo no disjuntor
- Montering av vrihåndtak på effektbryter
- Συνένωση ρελέ διαφυγής - διακόπτη Ισχύος
- Montaż napędu obrotowego na wyłączniku
- Установка поворотной рукоятки на автоматический выключатель
- 安装旋转手柄于 MCCB 上



- Test mécanique
- Functionnal Test
- Überprüfung des korrekten Anbaus
- Verifica accoppiamento
- Verificación del acoplamiento
- Controle van de juiste koppeling
- Verificação do acoplamento
- Funksjonstest
- Έλεγχ σωστής σύνδεσης
- Test działania
- Тест функционирования
- 功能测试



- Verrouillage
- Padlock system
- Knebelverriegelung
- Blocco leva
- Bloqueo mando
- Vergrendeling
- Bloqueamento do punho
- Låsbart håndtak
- Σλειδωμα
- Blokowanie klódka
- Система замка
- 挂锁系统

