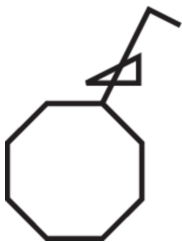
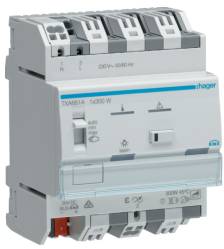


# Product data sheet

TXA661A

:hager



**IP20**

## DIMMER 1 CHANNEL 300W NE

### Technical Characteristics

Bus system	KNX
Fixing mode	REG
Function	Learning function for optimised operation of compact fluorescent lamps and LED luminaires can be activated via the bus
Indicator lamp	yes
Frequency	50/60 Hz
Supply voltage	30V DC via Bus + 230V AC
Fuse	short-circuit and overload proof (electronic fuse) short-circuit proof and overload proof (display using LEDs) overheating protection (display using LEDs)
Incandescent bulb power	300 W
Total power loss under IN	320 mW
Power dissipation per coil	180 mW
Number of modules	4
Colour	light grey
Connection cross-sect. flexible conductor	0,5 / 2,5mm <sup>2</sup>
Connection cross-sect. rigid cable	0,75 / 2.5mm <sup>2</sup>
Type of load	universal
Type of connection	quick connect
Type of connection	with QuickConnect plug-in terminals
Dimming principle	phase cut-on or cut-off according to load type, self-learning minimum/maximum dimming values per channel settable on device
Protection index IP	IP20
Protection	with overheating, overload and short-circuit protection
Operating temperature	-5...45 °C

