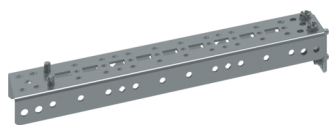


**Perforated Bracket,quadro evo, L300 mm**

**Technical properties**



UC300FU

**Dimensions**

Depth of installed product	44 mm
Height of installed product	50 mm
Width of installed product	300 mm
Built-in height	50 mm

**Cover, door**

Cover type	Closed (plain)
Cover type	none / closed

**Connection**

Number of conduit inlets	0
--------------------------	---

**Equipment**

Number of rows	0
Quantity of rails	0
Can be accessorized	No
Extension possible	No

**Standards**

Approvals	EN 61439-1/-2
European directive WEEE	not concerned

**Safety**

IK protection code against mechanical impacts	10
Protection class	isol.class I
REACH conform	Yes
RoHS conform	Yes
Halogen free	Yes