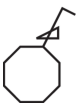




TYB691F



Universal dim actuator 1gang 210W/VA flush mounted

Technical properties

Architecture

Bus system	KNX
Fixing mode	flush-mounting

Functions

Number of function channels	2
Bus module detachable	No
Multi-phase mode	for 1 phase operation
Function	binary input functions: Switching, dimming, blind control and value transmitter
Soft startup	bulb-preserving soft startup

Configuration

Number of modules	0
-------------------	---

Controls and indicators

Indicator lamp	no
Button / push-button	with programming button and red programming LED

Connectivity

Binary inputs	with 2 independent binary inputs for potential-free contacts
---------------	--

Main electrical features

Frequency	50/60 Hz
-----------	----------

Voltage

Input voltage	230 V AC
Operating voltage over bus	21...32 V DC
System supply voltage	230V AC

Electric current

Bus current consumption (data transfer)	8.2 mA
---	--------

Fuse

Fuse	short-circuit and overload proof (electronic fuse)
------	--

Dimensions

Dimensions (Ø x H)	53 x 28 mm
Width of rail mounted device (RMD)	0 modules
Height	28 mm

Power	
Dimmable conventional transformers	50...210 VA
Incandescent bulb power	50 / 210 W
Power of the variator	50 / 210 W
Electronic transformers	50...210 W
Materials	
Colour	light grey
LED control	
Max number of LED/CFL lamps	0
Incandescent bulbs control	
Max. power with incandescent lamps	210 W
230 V incandescent lamps and halogen lamps	50...210 W
Connection	
Type of load	universal
Conductor cross-section (rigid)	1...2.5 mm ²
Bus coupling unit	with integral bus coupling unit
Bus connection	bus connection via pre-assembled cable with bus connection terminal
Cable	
Load cable length	max. 5 m
Cable length, bus + inputs (extendable to max. 5 m)	33 cm
Settings	
Supported configuration modes	system
Scope of delivery	
Bus connection included	Yes
Accessories included	
Box	installation in flush-mounted or splash-protected junction box
Equipment	
Number of outputs	1
Number of inputs	2
Type of dimmer	dimming actuator
Modular expandability	No
Dimming principle	phase cut-on or cut-off according to load type, self-learning
Interface 1-10 V	No
Use	
Differentiation characteristic 3 - Sales	with screw terminals
Safety	
Protection index IP	IP20

Subject to technical modifications

Protection

with overheating, overload and short-circuit protection

Use conditions

Operating temperature	-5...45 °C
Storage/transport temperature	-20...70 °C

Identification

Main design line	KNX
------------------	-----